

# FALCON-EduCase User Guide:

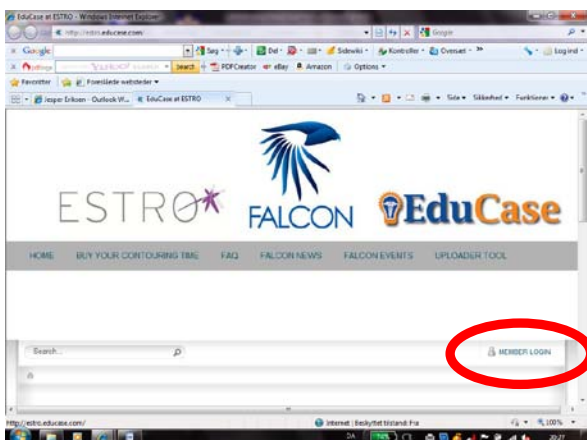
---

## Introduction to FALCON-EduCase

FALCON-EduCase is an online training tool for educational purposes at ESTRO courses, meetings, workshops or even at home. The FALCON-EduCase interface is not a treatment planning system but a user friendly educational instrument for training radiotherapy professionals in contouring tumor volumes, target areas, normal structures and OAR. Thus you may not find features such as auto-contouring, interpolation tools, expansion tools etc.

## How to get started with FALCON-EduCase

You do not need specific software other than Adobe Flash Player, which you can download for free from the internet. After having done that (if you do not already have it), go to <http://estro.educase.com>



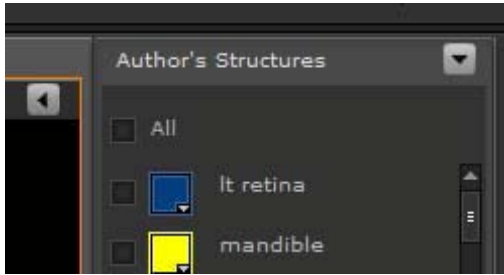
Click on “member login” and type your username and password in the pop-up window. A new page will show up. At the bottom of the page you will find the available ‘Cases for Delineation.’ Click on the type of cases you want to see and you will be presented to all the available cases within the selected group.

For opening a specific case click on “Launch the case viewer” and you will be directed to the case. Allow some time for the data to be fully loaded. Now you are ready to get started!

## Contouring Tools

### Viewing Authors contours and User’s Practice contours

On the right menu you will see “Author Structures” on top and “Your Practice Structures” on the bottom. (*The “authors” contours refer to the primary contours and the “practice contours” will refer to user (student) that is logged in*) Author’s contours can be toggled on/off by clicking the “All” checkbox or each ROI (Region Of Interest) individually. “Your Practice Structures” can be toggled on/off by clicking the “All” checkbox or each ROI individually. Clicking “Your Practice Structures” **does not initiate drawing** it is only for viewing. For drawing the structure must be selected from the ROI pulldown menu.



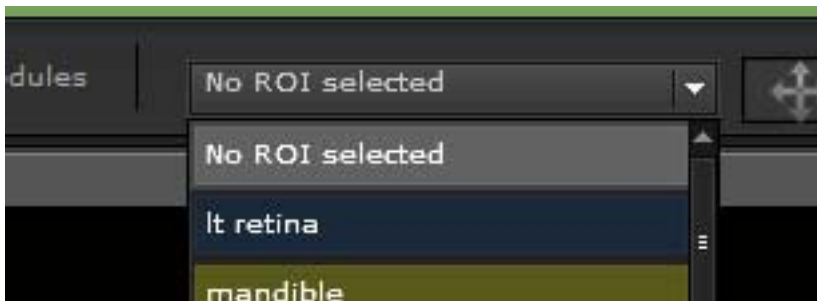
## Drawing Contour Tools

To find the contouring tools, maximize your screen and rollover the “Tool Console” tab to bring up the Tool folder options. Click the “Contouring Tools” folder to initiate the contouring tool features.



## “Contouring Tools” menu include:

1. ROI selection pulldown menu (This is to select the ROI you wish to contour)



2. Pan Tool: Pans image in main image pane



3. Free hand drawing tool: Used to draw contour after ROI has been selected from ROI pulldown menu

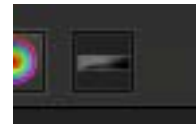
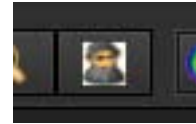
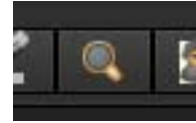


4. Pont-to-Point drawing tool: Used to draw contour after ROI has been selected from ROI pulldown menu. To complete drawing you must click on first point to close the contour loop. Each point can be dragged to optimize contour once loop is closed.





5. Magnifying Glass: Click icon to initiate small magnification feature on main image pane. A box will appear to drag over section of image to be magnified. Mouse scroll can change magnification.
6. Spy Glass: Allows user to view through primary image and see secondary image layered below.
7. Isodose Lines for RT Dose Plans: Initiates isodose lines when RT Dose Plan is available.
8. Clear Contour: Allows user to clear most recently drawn contour. If more than one contour has been drawn on image each previous contour will be cleared as user clicks button.
9. Save Contour: By clicking this button you will be prompted to save you contour in "Save as Public" or "Save as Private".

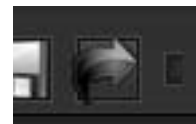


**Save as Public:** Users may save their contours in "Public" mode which allows for everyone to open and view the saved contours.

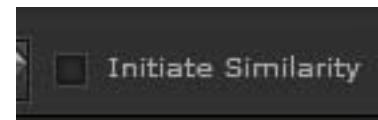
**Save as Private:** Users may save their contours in "Private" mode which allows for only the case owner to open and view the saved contours.



10. Load Contours: This button allows the case owner to pull up contours that have been saved by users.



11. Initiate Similarity Metric: Similarity metric is a measuring tool used for testing student's contouring accuracy. Results are captured and displayed as quantitative values. See "Similarity Metric" document for more details.





## “Main Image Pane”

1. Initiate Main Image Pane: You must click on the Main Image Pane in order to interact with the image. An orange border will appear when image pane is active.



2. Pan image: Panning image is set as default. Once a user clicks a contouring tool icon, example: *Freehand drawing*, they must click the “pan” icon again to pan an image on the main image pane.

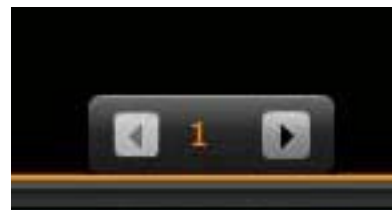
3. Zoom image:

- a. Click on Main Image Pane to initiate “Zoom” menu bar (See image #1)
- b. Click “Zoom” menu bar to initiate zoom feature
- c. Drag arrow or click line to zoom image in and out
- d. Click “Zoom” menu bar again to close



4. Navigate image slices: You go navigate from slice to slice by using any of the three following methods:

- a. Image Pane: slice number navigation is located at the bottom of the main image pane. Can be viewed when main image pane is initiated (See Main Image Pane #1)



- b. Mouse Scroll: Slice can be navigated up or down by using the mouse scroll wheel



- c. Thumbnails: You can select a specific numbered slice by choosing one of the thumbnail images on the left-hand “Slices” menu bar



## View Tools

### Functionality

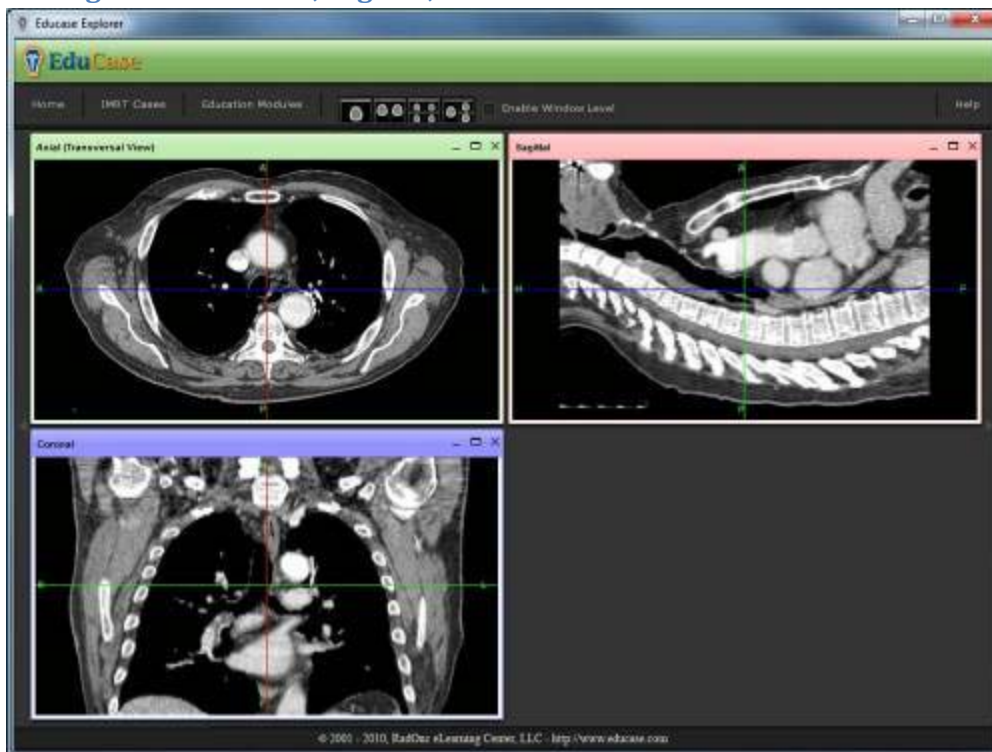
The “View Tools” component of EduCase allows users to define parameters for viewing CT and PET images in various layering views and multiple windows.

### Image View Types

#### Single CT image in a single window



## Orthogonal view: Axial, Sagittal, and Coronal



## Single PET and CT image in a single window

